



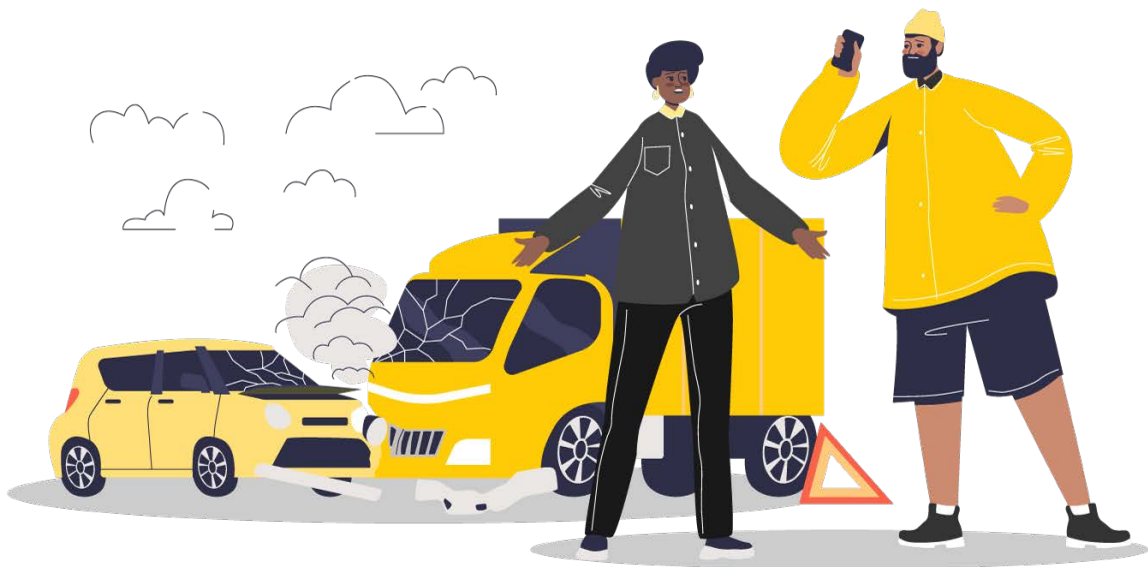
Coverage: If any motor accident arising out of the use of the Insured Vehicle, SGI will provide an advocate to guide and/or defend the Insured from police and proceedings in the court of judicial magistrate only.

Key Benefits / Guidance provided for:

- Bail formalities at police station
- Superdari process for releasing of vehicle till further orders
- Advocate to guide and/or defend from any police cases/legal proceedings in the court, limited to judicial magistrate only

Claim: The Accident must take place within the Policy Period and must be reported to SGI, no later than 7 days from the date of Accident.

Vehicle Type	Premium (₹)
Two-Wheeler	450
Private Car	
<= 1000cc	1050
>1000 <= 1500 cc	1850
> 1500cc	1150
Commercial Vehicle	
Goods Carrying Vehicles with GVW less than equal to 7500 Kgs	1000
Goods Carrying Vehicles with GVW Exceeding 7500 Kgs but Not Exceeding 12000 Kgs	1300
Goods Carrying Vehicles with GVW Exceeding 12000 Kgs	1400
Three-Wheeler with carrying capacity Exceeding 6 passengers but Not Exceeding 17 passengers	500
Three-Wheeler with carrying capacity Not Exceeding 6 passengers	500
Four-Wheeler with carrying capacity Not Exceeding 6 passengers and Not Exceeding 1000 CC	800
Four-Wheeler with carrying capacity Not Exceeding 6 passengers and Exceeding 1000 CC but Not Exceeding 1500 CC	1450
Four-Wheeler with carrying capacity Not Exceeding 6 passengers and Exceeding 1500 CC	800
Four or more Wheeled with carrying capacity Exceeding 6 passengers and Three-Wheeler with carrying capacity Exceeding 17 passengers	1100
Commercial Vehicle Miscellaneous – Tractor	475



Disclaimer: Copyright © Shriram General Insurance Co. Ltd., All rights reserved. The advertisement contains only an indication of the cover offered with Shri Motor Protection - Motor Two-Wheeler Package Policy (UIN: IRDAN137RP0017V01200809/A0002V01202223), Shri Motor Protection - Bundled Motor 2 Wheeler Policy (UIN: IRDAN137RP0007V01201819/A0004V01202223), Shri Motor Protection - Stand-alone Motor OD (Two Wheeler) Policy (UIN: IRDAN137RP0003V01201920/A0003V01202223), Shri Motor Protection - Motor Commercial Vehicle (Package Policy), (UIN: IRDAN137RP0018V01200809/A0008V01202223), Shri Motor Protection - Bundled Motor Private Car Policy (UIN: IRDAN137RP0006V01201819/A0007V01202223), Shri Motor Protection - Motor Private Car (Package Policy) (UIN: IRDAN137RP0016V01200809/A0005V01202223), Shri Motor Protection - Stand-alone Motor OD (Private Car) Policy (UIN: IRDAN137RP0002V01201920/A0006V01202223), Shri Motor Protection- Motor Commercial Vehicle (Package Policy) -Misc D (Tractor) - IRDAN137RP0018V01200809/A0009V01202223 IRDAI Regn. No. 137 CIN No. U66010RJ2006PLC029979 ISO/IEC 27001:2013 certified SGI/Advt./2023-24/60. Registered & Corporate Office: E-8, EPIP, RIICO Industrial Area, Sitapura, Jaipur- 302022 Rajasthan (India) *Terms and Conditions apply.

For more details on risk factors, terms and conditions please read sales brochure carefully before concluding a sale.